

**Navodila za montažo**  
*Installation instructions*  
**Инструкции для монтажа**  
*Szerelési útmutató*  
**Instructiuni de instalare**

SLO  
 GB  
 RUS  
 HUN  
 ROM



**Enoročna kuhinjska armatura, vrtljiva, z gibljivimi priključnimi cevmi**

*Single lever kitchen mixer tap, swivel spout, with flexible hoses*

*Однорычажной кухонный смеситель, поворотный, гибкие шланги*

*Egykaros, hajlítható házas csaptelep, es bekötőcsövek*

*Baterie de bucatarie monobloc, cu racord flexibil*

**ALVEUS**

*An expression of taste*

KOVINOPLASTIKA LOŽ d.d., C. 19 oktobra 57, 1386 Stari trg pri Ložu, Slovenija  
 e-mail: info@alveus.si www.alveus.si



P  
 bar



T  
 C



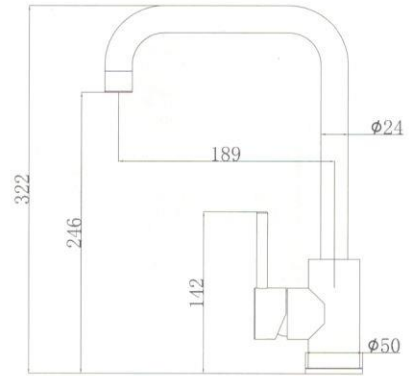
**V primeru večjega pritiska vode kot 8 bar v vodnem sistemu, je potrebno uporabiti reducirni element.**

*In case of operating pressures higher than 8 bar it is recommended to install a pressure reducer on the feeding tubes.*

*В случае если давление воды будет превышать 8 бар, рекомендуется установка редуктора (для уменьшения давления воды).*

*Abban az esetben, ha a nyomás nagyobb 8 bar-nál, ajánlatos a bejövő vezetékre egy nyomáscsökkentő felszerelése.*

*In cazul in care presiunea apei este mai mare de 8 bar, este recomandat sa se instaleze un reductor de presiune in locul de alimentare al tevii.*

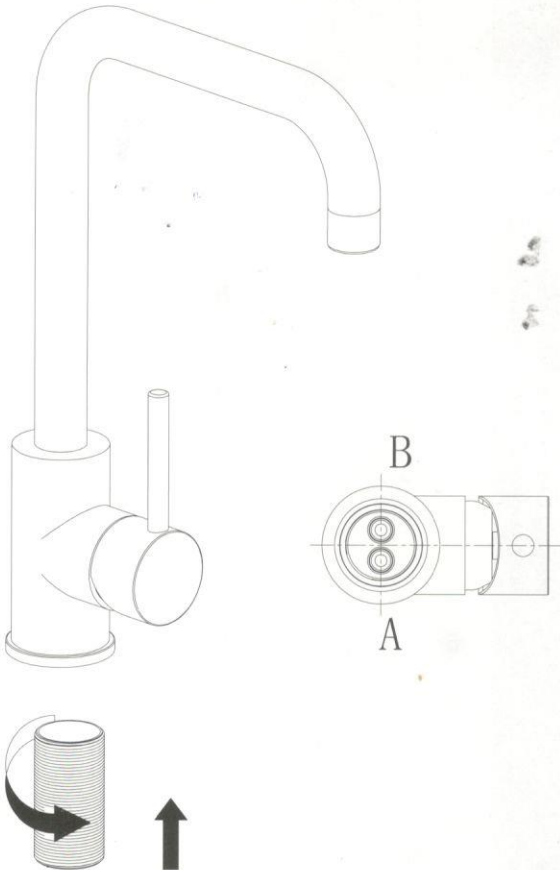


NO

NO

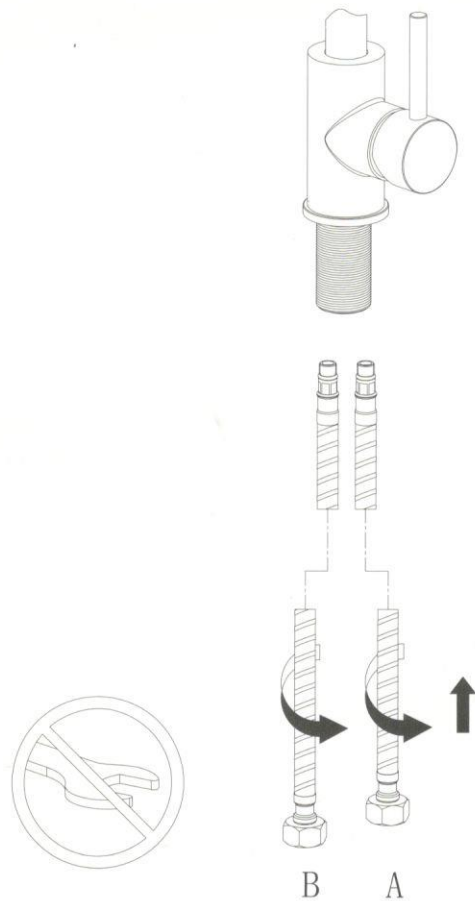
Navodila za montažo / Installation instructions / Инструкции для монтажа  
 Szerelési útmutató / Instructiuni de instalare

1



Navodila za montažo / Installation instructions / Инструкции для монтажа  
 Szerelési útmutató / Instructiuni de instalare

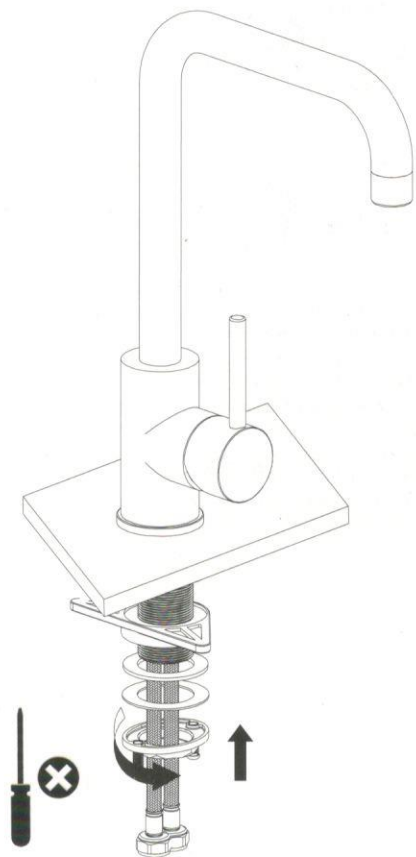
2



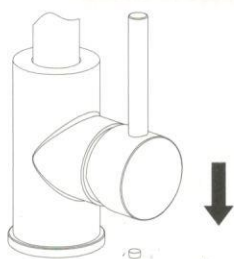
NO

NO

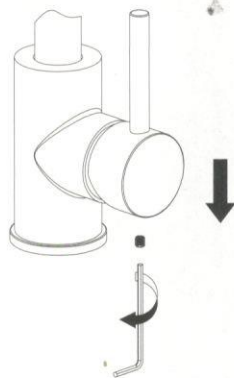
3



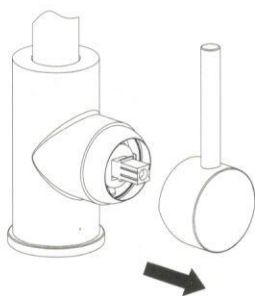
1



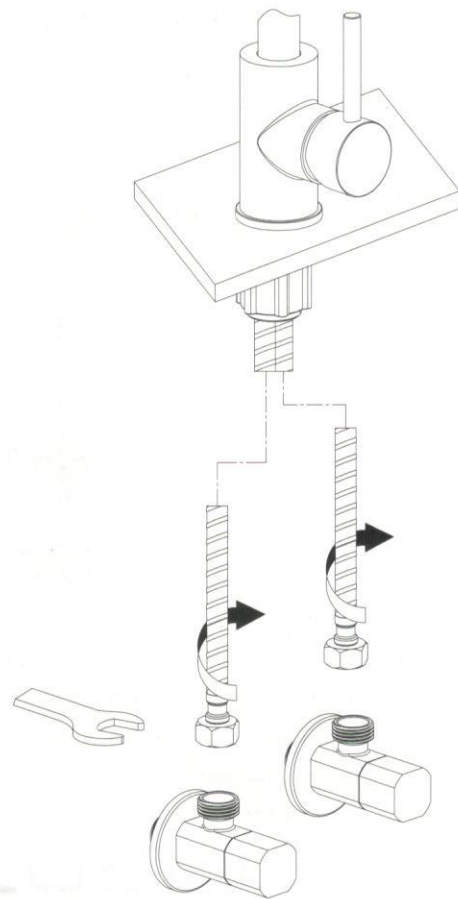
2



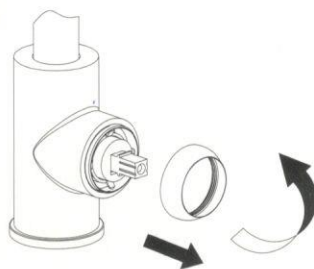
3



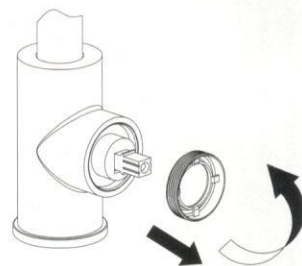
4



4



5



6

